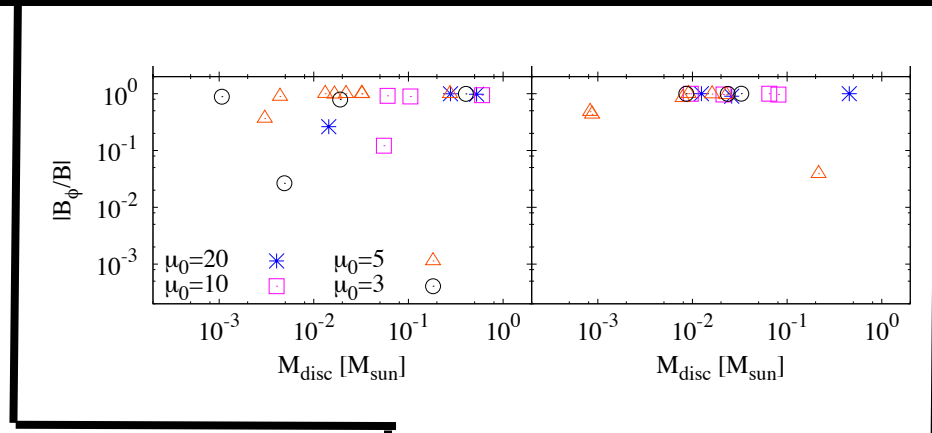
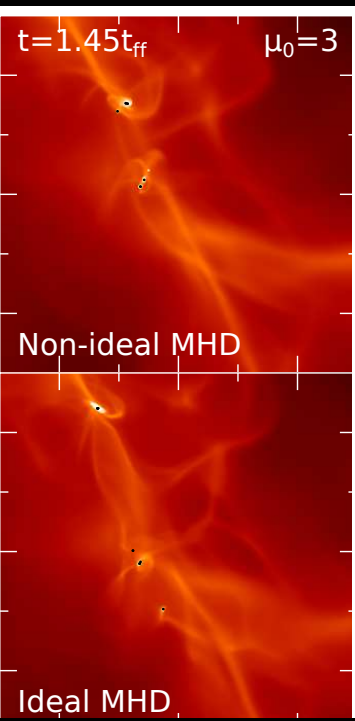


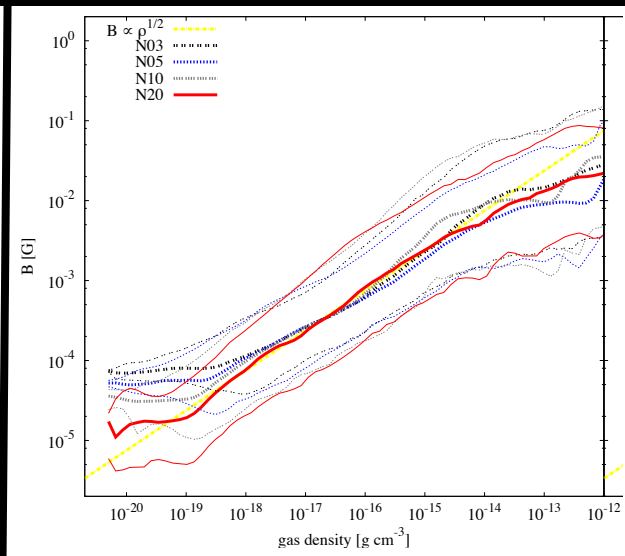


# Magnetic fields in the ISM and their effect on filaments, stars & discs



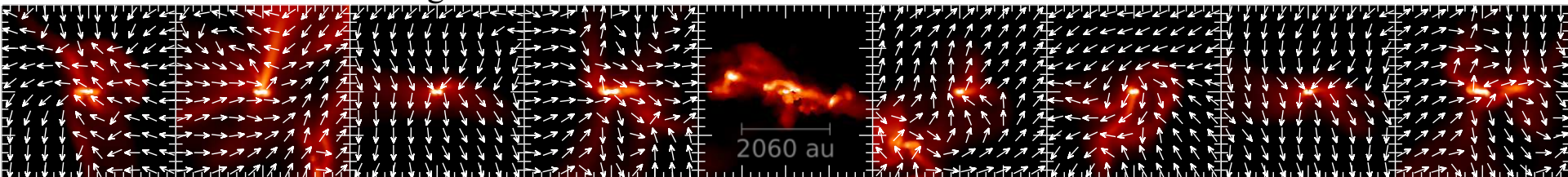
Ideal MHD affects large-scale structures, while non-ideal MHD affects small-scale structures

Magnetic field strength in the disc is primarily poloidal



A ~2dex range of magnetic fields strengths exists at all 'evolved' gas densities

'Hour-glass' magnetic field is prominent in high-resolution simulations of isolated stars, but not at the lower resolution in the cluster setting



James Wurster

[jhw5@st-andrews.ac.uk](mailto:jhw5@st-andrews.ac.uk)

<https://jameswurster.bitbucket.io/>